



TRUST
Over **IP**
FOUNDATION

Privacy & Risk TF Bi-Weekly Meeting

15 November 2021

 THE **LINUX** FOUNDATION

Antitrust Policy Notice

- › Linux Foundation meetings involve participation by industry competitors, and it is the intention of the Linux Foundation to conduct all of its activities in accordance with applicable antitrust and competition laws. It is therefore extremely important that attendees adhere to meeting agendas, and be aware of, and not participate in, any activities that are prohibited under applicable US state, federal or foreign antitrust and competition laws.
- › Examples of types of actions that are prohibited at Linux Foundation meetings and in connection with Linux Foundation activities are described in the Linux Foundation Antitrust Policy available at <http://www.linuxfoundation.org/antitrust-policy>. If you have questions about these matters, please contact your company counsel, or if you are a member of the Linux Foundation, feel free to contact Andrew Updegrave of the firm of Gesmer Updegrave LLP, which provides legal counsel to the Linux Foundation.

Membership Advisory

- › For the protection of all Members, active participation in working groups, meetings and events is limited to members, including their employees, of the Trust over IP Foundation who have signed the membership documents (including Trust over IP membership agreement as well as relevant working group charters) and thus agreed to the intellectual property rules governing participation.
- › If you or your employer are not a member, we ask that you not participate in meetings by verbal contribution or otherwise take any action beyond observing.

Newcomer Introductions

(30 seconds!)

1. Name
2. Location / time zone
3. Affiliation(s)
4. One-sentence summary of your interest in Privacy & Risk TF

Agenda

1. Welcome (Jan – 5 mins)
2. Newcomer Introductions
3. Topics (all – 40 minutes)
 1. Industry sector discussion from slack (Paul)
 2. Data Rights Protocol discussion, Consumer Report (Jan)
 3. Governance Technical Architecture input from Task Force (all)
4. Following up
 1. PRTF output: privacy and risk specification walkthrough
 2. Comments to ICO Guide to anonymization
5. Summary (Jan—5 mins)
 - › Meeting schedule

Industry Sector Categorisation

Option

GICS: Global Industry Classification Standard

“The Industry Standard”



The **GICS** indices is an industry taxonomy for use by the global financial community as a basis to assign companies to a sub-industry, and to an industry, industry group, and sector, by its principal business activity.

- 11 Sectors
- 24 Industry Groups
- 69 Industries
- 158 Sub-Industries



Data Rights Protocol

Motivation:

- › Difficulties with delivering responses to users' data rights requests and lack of standardization.
- › Minimize burden on businesses for exercising these rights and providing verifiable identity attestation

Supported rights (CCPA)

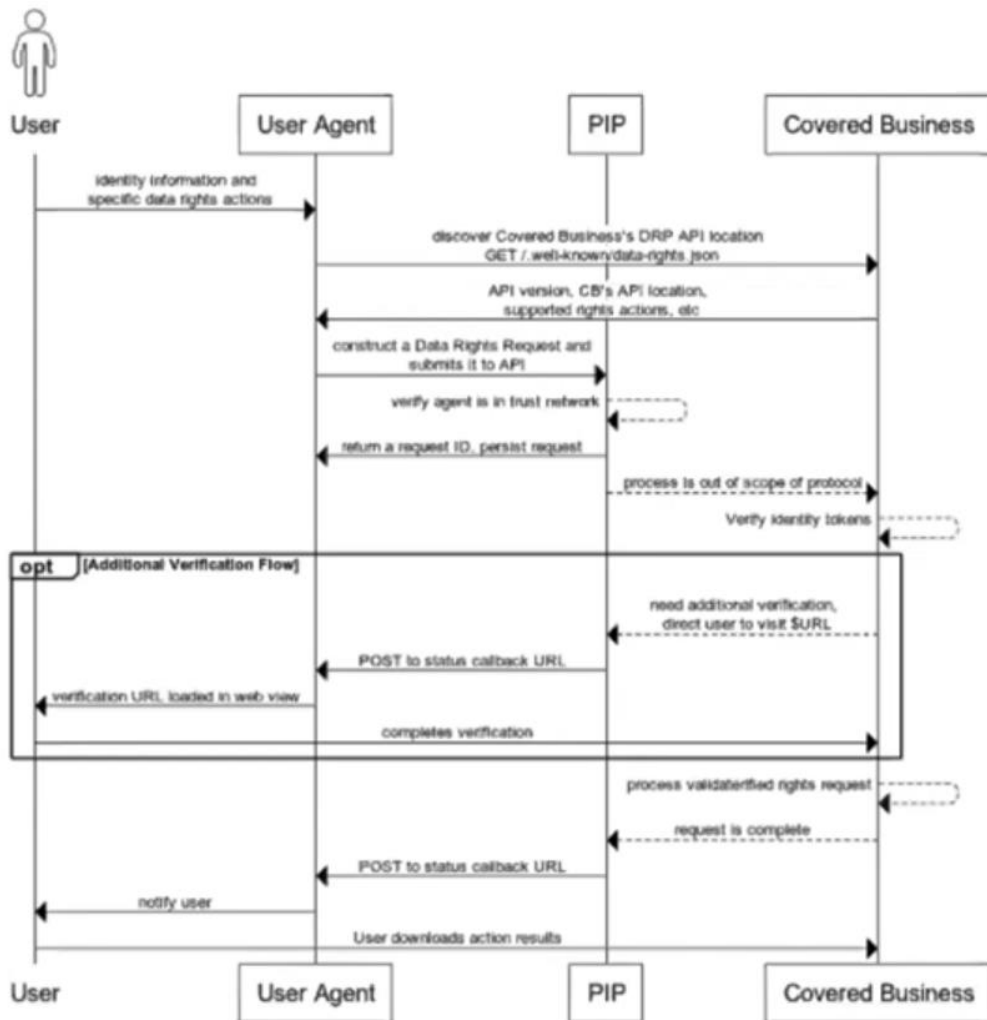
- › Opt-out
- › Opt-in
- › Delete
- › Know (access + categories + specific)

<http://datarightsprotocol.org/>

<https://github.com/consumer-reports-digital-lab/data-rights-protocol>

Data Rights Protocol

> Implementors



Technical Architecture Specification input from PRTF

- | | |
|--|-----------------------------|
| › Requirements of Layer 1: Public Utilities | Possible input |
| › Requirements of Layer 2: Peer-to-Peer Protocol | › Data Agreement w/ purpose |
| › Requirements of Layer 3: Data Exchange Protocols | › Assessment of risk |
| › Requirements of Layer 4: Ecosystem Applications | › Certification |

https://docs.google.com/document/d/1xProo7_jm74mGyvIT8TKtCqp2cN9IUCtbTS3hUGsi_0/edit?usp=sharing

Summary (5 mins)

Recording

<https://wiki.trustoverip.org/display/HOME/PRTF+Meeting+Pages>

Next call: November 29th

Legal Notices

The Linux Foundation, The Linux Foundation logos, and other marks that may be used herein are owned by The Linux Foundation or its affiliated entities, and are subject to The Linux Foundation's Trademark Usage Policy at <https://www.linuxfoundation.org/trademark-usage>, as may be modified from time to time.

Linux is a registered trademark of Linus Torvalds. Please see the Linux Mark Institute's trademark usage page at <https://lmi.linuxfoundation.org> for details regarding use of this trademark.

Some marks that may be used herein are owned by projects operating as separately incorporated entities managed by The Linux Foundation, and have their own trademarks, policies and usage guidelines.

TWITTER, TWEET, RETWEET and the Twitter logo are trademarks of Twitter, Inc. or its affiliates.

Facebook and the "f" logo are trademarks of Facebook or its affiliates.

LinkedIn, the LinkedIn logo, the IN logo and InMail are registered trademarks or trademarks of LinkedIn Corporation and its affiliates in the United States and/or other countries.

YouTube and the YouTube icon are trademarks of YouTube or its affiliates.

All other trademarks are the property of their respective owners. Use of such marks herein does not represent affiliation with or authorization, sponsorship or approval by such owners unless otherwise expressly specified.

The Linux Foundation is subject to other policies, including without limitation its Privacy Policy at <https://www.linuxfoundation.org/privacy> and its Antitrust Policy at <https://www.linuxfoundation.org/antitrust-policy>, each as may be modified from time to time. More information about The Linux Foundation's policies is available at <https://www.linuxfoundation.org>.

Please email legal@linuxfoundation.org with any questions about The Linux Foundation's policies or the notices set forth on this slide.